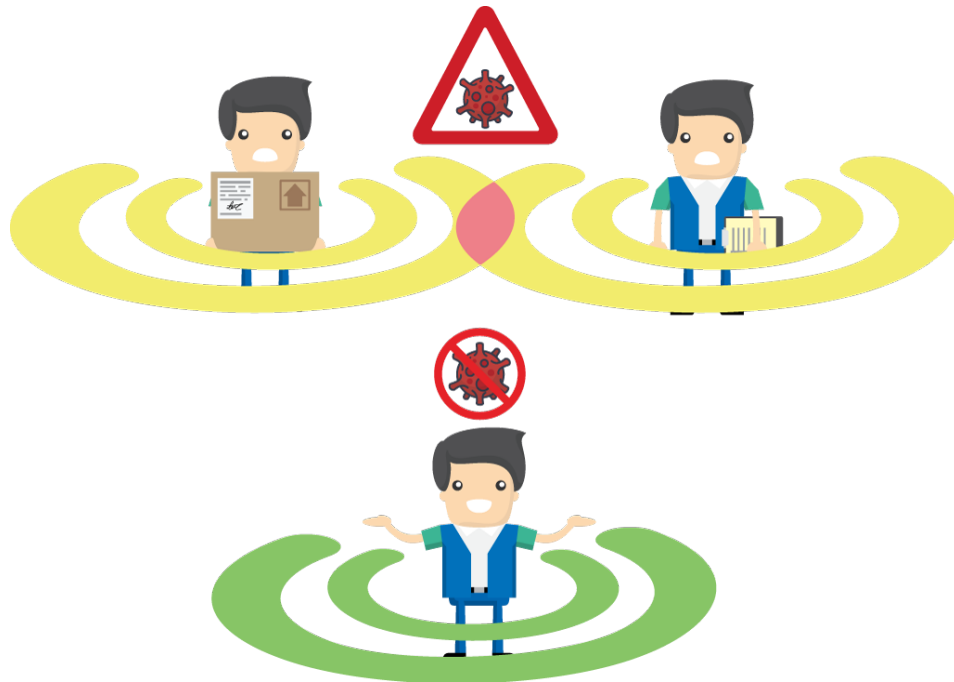


Dista-Safe



Index

Index	2
Dichiarazione di Conformità - EU Declaration of Conformity - (DoC)	3
Purpose of use and maintenance manual	4
Purpose of use and maintenance manual	5
How to read the manual	5
Unit of measurement	5
Intended use	6
Use not allowed	6
General safety warnings	6
Warnings on the emission of radio waves	6
Risk assessment	7
Disclaimer	7
Manufacturer's warranty	8
Reference directives and standards	9
Dista-Safe functions	10
Safety distance	10
Risk of infection	10
Sanitation required	10
Find function	10
Report to the operator	11
Maintenance	12
Recharge the battery	12
Details about wireless charging	12
Battery	13
How to clean the Dista-Safe	13
How to clean the charging station	13
Use of disinfectants	13
Technical features	14

Dichiarazione di Conformità - EU Declaration of Conformity - (DoC)

Noi - We

Fabbricante - *Manufacturer:*

Kiwitron S.R.L.

Indirizzo - *Address:*

Via Primo Maggio 5/9, 40037
Pontecchio Marconi (BO) - Italy

Dichiariamo che il DoC è rilasciato sotto la nostra unica responsabilità ed è legato al seguente prodotto:

Declare that the DoC is issued under our sole responsibility and belongs to the following product:

Anticollisione tag (X001340) - Dista-Safe (X101340)

Oggetto della dichiarazione - *Object of the declaration:*

Dispositivo indossabile per anticollisione con rilevamento distanze
Wearable anti-collision device with distance measurement

L'oggetto della dichiarazione su descritto è in conformità con le vigenti normative armonizzate:

The object of the declaration described above is in conformity with relevant Union harmonisation legislation:

Direttiva - *Directive* 2014/53/EU (RED)

Sono stati applicati i seguenti standard armonizzati e specifiche tecniche:

The following harmonised standards and technical specification have been applied:

ETSI EN 302 065-2 V2.1.1 (2016-11)

ETSI EN 301 489-1 V2.2.3 (2019-11)

ETSI EN 301 489-3 V2.1.1 (2019-03)

ETSI EN 301 489-33 V2.2.1 (2019-04)

ETSI EN 300 330 V2.1.1 (2017-02)

Luogo - *Date:*

Place- Date:

Pontecchio Marconi BO (Italy), 2020-04-13

Firma Legale Rappresentante:

Legal representative signature:

Carlo Petrelli



Purpose of use and maintenance manual

This Instruction Manual is an integral part of the Dista-Safe system and aims to provide all the information necessary for:

- The correct installation of the electronic devices (hardware and software) that make up the system;
- The deep knowledge of its operation and intended use;
- Increasing operators awareness about safety problems;
- Its correct use in safe conditions;



Read carefully the instructions in the manual before using the Dista-Safe system in order to always operate in safe conditions.



The technical information in this document is provided for information purposes only and does not constitute a contractual commitment.
Kiwitron s.r.l. reserves the right to make any graphic or functional modification to the devices and / or software without prior notice.



If the information in the manual seems insufficient, it is mandatory to contact the technical assistance of Kiwitron s.r.l.

Kiwitron s.r.l. **Customer Service**

Web site: www.kiwitron.it/help

Mail: support@kiwitron.it

Phone +39 051 1889 3470

Purpose of use and maintenance manual

The Manual in question is addressed: to the Installer, to the Operator of the vehicles on which it is installed, and to Qualified Personnel authorized to maintain the system.



The management of the Dista-Safe system must be assigned to appropriately trained and qualified personnel.



All personnel authorized to install, manage and use the Dista-Safe system must have read and understood this use and maintenance manual.

How to read the manual

The manual has been divided into autonomous chapters, to facilitate the immediacy of understanding the text; terms, abbreviations and pictograms are used and their meaning is indicated below.

ABBREVIATIONS:

Par. = paragraph

Pag. = page

Fig. = figure

Tab. = table

PICTOGRAMS:

Pictograms	Description
------------	-------------



ATTENTION: Pay attention to what is indicated in the text next to this pictogram.



PROHIBITION: it indicates operations or actions that are not allowed.

Unit of measurement

The units of measurement indicated in the manual are those provided by the international system (IS).

Intended use

The Dista-Safe device is an active Personal Protective Device that helps the user to maintain an adequate interpersonal distance.

The device is wearable which can be worn on the wrist, neck or pocket. And it warns the operator through vibration, acoustic and visual signal.

Use not allowed

Any use of the Dista-Safe system not expressly described in this manual is not allowed.



Dista-Safe does not protect against contagion risks due to COVID-19, pathogens or biological risks in general.



Dista-Safe is not a medical device.



Dista-Safe is not a safety device.

General safety warnings



Dista-Safe cannot replace traditional anti-infection measures such as masks, gloves or detergents.



Dista-Safe is able to report insufficient interpersonal distance only between people who have it.



Do not use the Dista-Safe system in the presence of flammable gas or fumes, near filling stations, fuel depots, chemical plants or during blasting operations. Avoid any potentially explosive atmosphere.

Warnings on the emission of radio waves

The Dista-Safe system receives and emits radio waves.

The wireless modules used for transmissions meet all the safety requirements needed in the field of high frequency radio wave communications.

The maximum power radiated by the Dista-Safe system is below the thresholds imposed by the regulations.

Interference may be generated when used in proximity to devices such as TVs, radios, computers or any unshielded electrical / electronic equipment.



Observe the restrictions imposed on the use of electronic devices if the Dista-Safe is used:

In hospital or other healthcare facilities.

Near an airport.

In all areas where there are restrictions imposed due to the use of electronic devices.

Risk assessment

The operator (owner of the vehicle) is obliged to carry out an environmental risk analysis before using the Dista-Safe.

It is absolutely necessary to ensure that any malfunction of the Dista-Safe device does not compromise the safety or productivity of the operators and the plant.

It is essential to evaluate the situation in which the device should work abnormally.

Disclaimer

Kiwitron s.r.l. is relieved of any responsibility for damages caused by:

- Improper use of the system.
- Use by unqualified and / or not trained personnel.
- Incorrect installation.
- Power supply defects (only for charging station).
- Inadequate maintenance.
- Unauthorized modifications or interventions.
- Use of not original spare parts.
- Use of accessories not provided for or not authorized in writing.
- Total or partial non-compliance with the instructions.
- Exceptional events.
- Not in accordance with the legislation and norms currently in force in the country of installation.

Manufacturer's warranty

Kiwitron s.r.l. as a manufacturer of the Dista-Safe system recognizes the following warranty period on the following components of the Dista-Safe system:

- Dista-Safe internal battery: 6 months
- Dista-Safe device: 1 year
- Charging station: 1 year
- Charging station power supply: 1 year

The period starts from the date shown on the DDT. The warranty is not applicable as a result of breakages and / or defects caused by:

- Improper use of the system
- Use by unqualified and / or not trained personnel
- Incorrect installation
- Power supply defects (only for charging station)
- Inadequate maintenance
- Unauthorized modifications or interventions
- Use of not original spare parts
- Use of accessories not provided for or not authorized in writing
- Total or partial non-compliance with the instructions
- Exceptional events
- Not in accordance with the legislation and norms currently in force in the country of installation.

The warranty does not extend to parts that wear out as a result of normal use such as (by way of example but not limited to):

- consumable parts, such as batteries or protective coatings, subject to deterioration over time, except in the event of defects in materials or workmanship;
- cosmetic damage, including, but not limited to, scratches, dents or cracks in plastic parts, except in the case of defects in materials or workmanship;

Reference directives and standards

The Dista-Safe system and its components have been designed and built in particular compliance with:

Directive 2014/53/EU (RED)

ETSI EN 302 065-2 V2.1.1 (2016-11)

ETSI EN 301 489-1 V2.2.3 (2019-11)

ETSI EN 301 489-3 V2.1.1 (2019-03)

ETSI EN 301 489-33 V2.2.1 (2019-04)

ETSI EN 300 330 V2.1.1 (2017-02)

Dista-Safe functions

The main features of the Dista-Safe device are listed and detailed below.

Safety distance

Dista-Safe measures the interpersonal distance between those who have it. When two or more people approach the safe distance, Dista-Safe beeps and starts vibrating. In addition, the red light flashes quickly to invite users to immediately reset the safety distance.

Risk of infection

If the distance is not respected for more than 5 seconds, the red Dista-Safe light stores the situation created and flashes slowly until it is reset by positioning Dista-Safe on the charging station. When you place the Dista-Safe on the charging station, a long beep is emitted.

Sanitation required

Dista-Safe requires complete sanitization at each work shift (8 hours). The sanitation light flashes slowly and alternately between red and green. After sanitizing Dista-Safe, reset the warning light by placing it on the charging station for a few seconds. When you place the Dista-Safe on the charging station, a long beep is emitted.

Find function

Dista-Safe is able to recognize when it is lost or abandoned. In this situation Dista-Safe activates a slow intermittent audible and visual signal, so that it can be easily traced. It is also possible to use the "Find Dista-Safe" function of the dedicated smartphone app.

Report to the operator

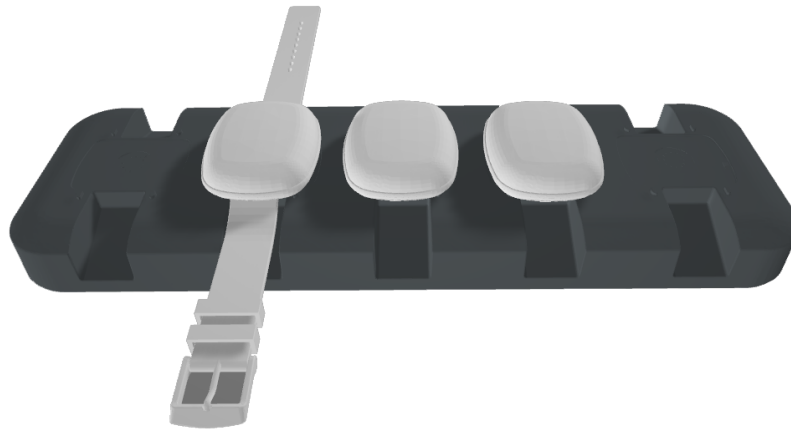
State	Deactivation	Red Light	Green Light	Speaker	Vibration
Battery charging	-	ON	OFF	OFF	OFF
Charging completed	-	OFF	ON	OFF	OFF
Safety distance not respected	walk away	Fast flashing	OFF	Double intermittent flashing	Double intermittent flashing
Abandoned device	recover the Dista-Safe	OFF	Double flashing	Short intermittently flashing	OFF
Contagion Risk	Place the Dista-Safe to charge	Double short intermittently flashing	OFF	OFF	OFF
Sanitation required	Place the Dista-Safe to charge	Alternate flashing with green light	Alternate flashing with red light	OFF	OFF
System running, battery charged	-	OFF	Short intermittently flashing	OFF	OFF
System running, low battery	-	Short intermittently flashing	OFF	OFF	OFF
Service mode	Wait 120 seconds or contact support	OFF	Fast flashing	OFF	OFF
Charging station detected	-	OFF	OFF	Long beep	OFF

Maintenance

Recharge the battery

Dista-Safe is equipped with a not removable rechargeable battery. Wireless charging must only be done by using the appropriate wireless charging stations supplied by Kiwitron.

1. Connect the charging station to the power supply. Use the Kiwitron power supply provided with the Dista-Safe.
2. Place the charging station on a flat surface.
3. Place the Dista-Safe on the charging station with the light facing upwards. Make sure to lock the Dista-Safe in the correct position by locking it on the 4 feet. When you place the Dista-Safe on the charging station, a long beep is emitted.
4. Dista-Safe should start charging a few seconds after being placed on the wireless charging station.
The light should turn solid red.



Details about wireless charging

- Wireless charging uses magnetic induction to charge the Dista-Safe. Do not place anything between the Dista-Safe and the charging station. Magnetic holder, cases or other objects placed between the Dista-Safe and the charging station could reduce performance or damage parts.
- The Dista-Safe may become slightly warm during charging. If the battery gets too hot, the software may protect it by preventing further charging. The Dista-Safe will continue to recharge when the temperature decreases. Try to move the Dista-Safe and the charging station to a cooler place.

Battery

Rechargeable batteries have a limited number of charge cycles and replacement may be required. The Dista-Safe battery cannot be replaced by the user; the replacement can only be done by the Kiwitron customer service.



Do not attempt to replace the Dista-Safe battery

How to clean the Dista-Safe

- Use only a soft, lint-free cloth. Avoid abrasive cloths, towels, paper towels or other similar objects.
- Avoid excessively rubbing the surfaces to avoid damaging the product.
- Do not use spray, bleach or abrasives.
- Do not spray detergents directly on the product.
- Do not immerse the Dista-Safe in any kind of liquids or detergents.
- Do not put the Dista-Safe in the washing machine.

How to clean the charging station

- Use only a soft, lint-free cloth. Avoid abrasive cloths, towels, paper towels or other similar objects.
- Avoid excessively rubbing the surfaces to avoid damaging the product.
- Do not use spray, bleach or abrasives.
- Do not spray detergents directly on the product.
- Make sure that no humidity gets into open parts.



The charging station is NOT waterproof and is NOT protected against the entry of liquids and dust.

Use of disinfectants

Using a wipe with 70% isopropyl alcohol you can gently clean the surfaces of the Dista-Safe and the charging station. Do not use bleach. Prevent the entry of humidity into open parts and do not immerse the Dista-Safe device into cleaning products.

If liquids get into Kiwitron products, ask for help from the service center as soon as possible. The warranty does not cover liquid damage.

Technical features

Protection class	IP 65
Dimensions	55x46x17 mm (without strap and pendant hook)
Working temperature	-20°C (if charging 0°C) min. 60°C max.
Internal battery	LiPo rechargeable
Recharge	Wireless with special charging station

Charging station

Protection class	IP 53
Dimensions	305x95x35mm (escluso alimentatore)
Working temperature	-40°C min. +85°C max.
Power Supply	Input: 100-240VAC 0,9A 50-60Hz Output: 12VDC 3.0A
Slots	5